



Gipsy Road, Welling, DA16 1HT

4 2 1

Price: Offers in Excess of £450,000

Summary

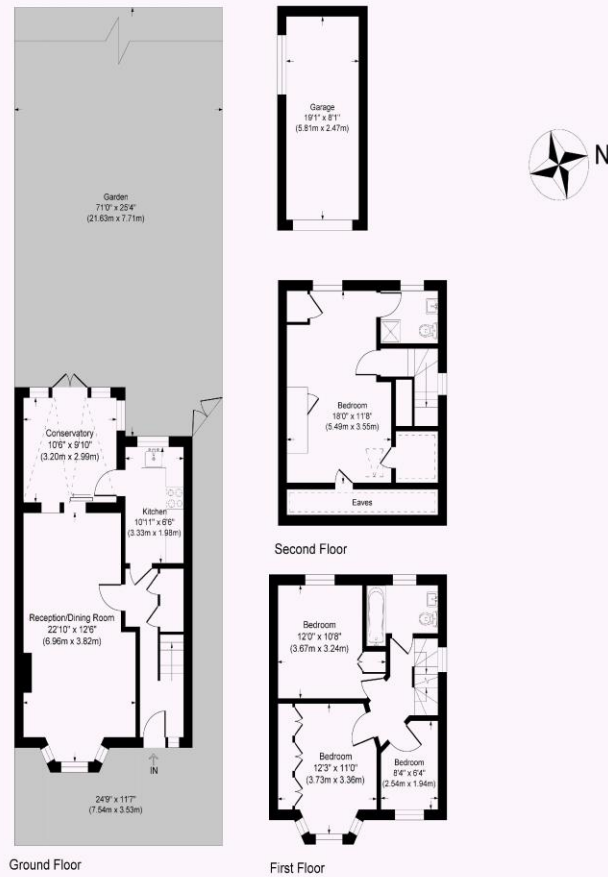
Spacious family home with real potential to add further value. Having already been extended into the loft offering a fantastic master bedroom with en-suite and opening up the reception rooms downstairs - the living areas are bathed in natural light. Benefitting from three double bedrooms and a reasonable fourth, external garage for additional storage space, conservatory to open up the living area downstairs - this really is a family home to be fully enjoyed with plenty of utility. With a plethora of schools in the local vicinity and Bexleyheath mainline station within half a mile - this really a fantastic location.

Features

- Half a Mile to Bexleyheath Station
- Extended into Loft
- Conservatory
- Master with en-suite
- Garage
- Great Potential
- Family Home







Gipsy Road

Approximate Gross Internal Area
 Ground Floor = 50.8 sq m / 548 sq ft
 First Floor = 36.1 sq m / 389 sq ft
 Second Floor = 25.6 sq m / 276 sq ft
 Garage = 14.3 sq m / 154 sq ft
 Total = 127.0 sq m / 1367 sq ft

This plan is for layout guidance only. Not drawn to scale unless stated. Windows and door openings are approximate. Whilst every care is taken in the preparation of this plan, please check all dimensions, shapes and compass bearings before making any decisions reliant upon them.



All measurements are approximate and are taken at the widest points. They should not be used for the purchase of furniture. Please note that appliances & services have not been tested. These particulars are issued on the express understanding that all negotiations are conducted through Anthony James Residential. They do not form part of a contract and are for general guidance only. We would strongly recommend that the information which we provide about the property is verified by yourselves on inspection and also by your solicitor before legal commitment to purchase. Photos and images are subject to copyright law.

See all our properties on...

