



Banks Lane, Bexleyheath, DA6 7BH

3 1 1

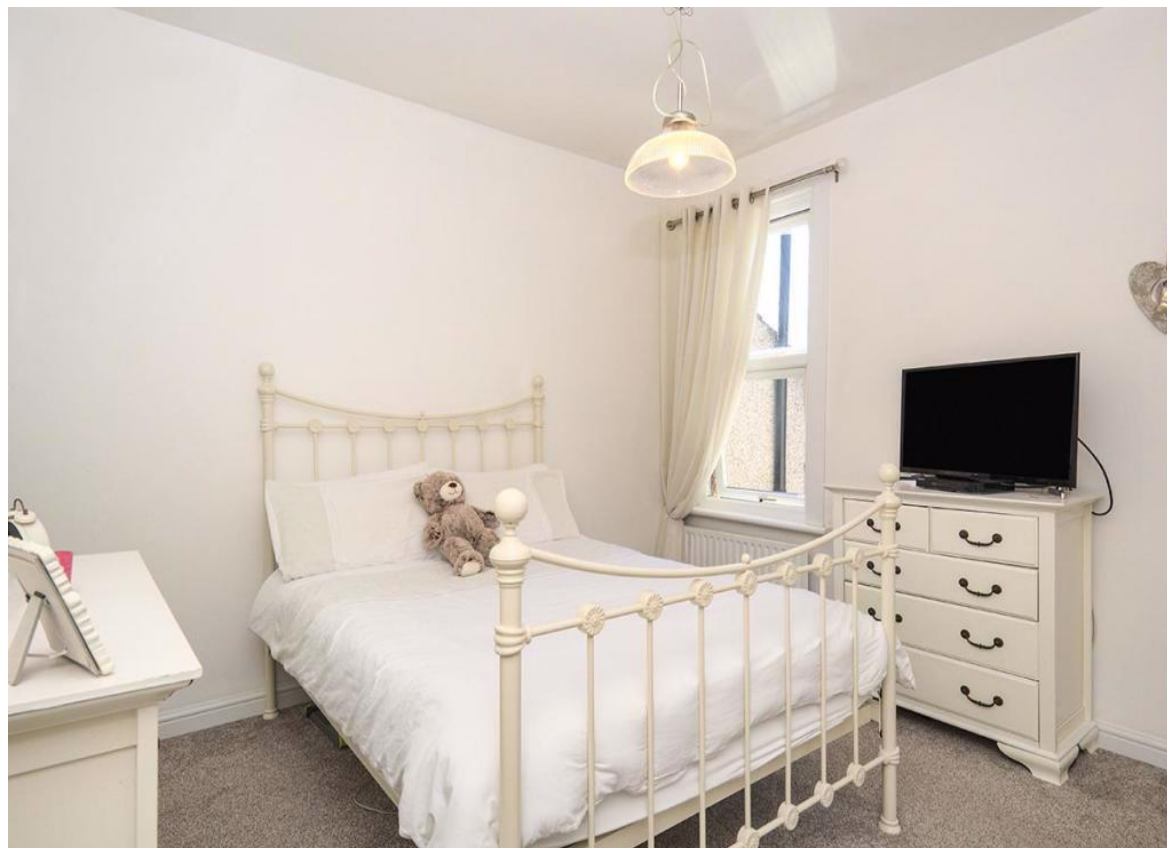
Price: Offers in Excess of £375,000

Summary

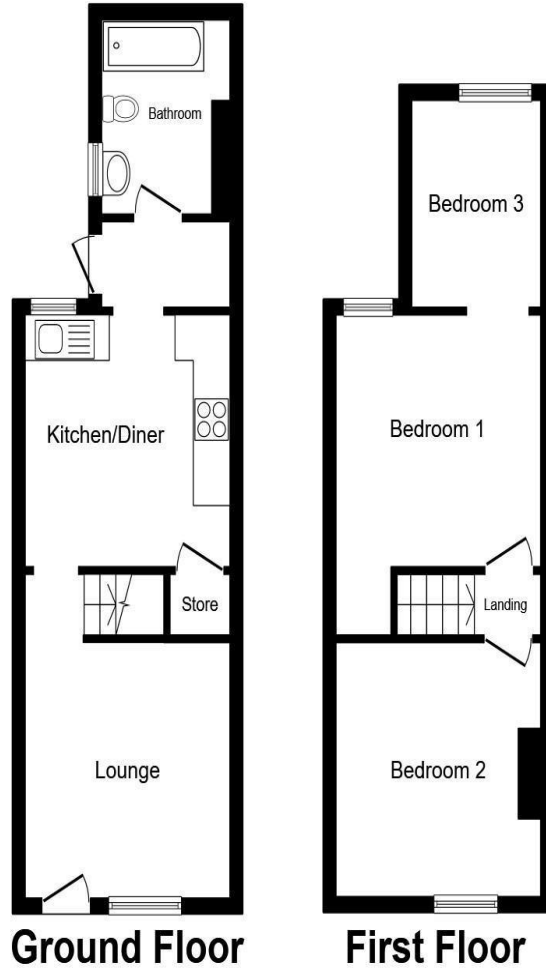
Beautifully presented three bedroom terraced house in the heart of Bexleyheath. With a wide range of local schools available, the mainline station within less than a mile and Bexleyheath High Street incredibly close by - this will suit a whole host of buyers.

Features

- Three Bedrooms
- Kitchen Diner
- Family Bathroom
- Garden to Rear
- Accessible to Station
- EPC - C







Total floor area 65.6 sq.m. (706 sq.ft.) approx

This floor plan is for illustrative purposes only. It is not drawn to scale. Any measurements, floor areas (including any total floor area), openings and orientation are approximate. No details are guaranteed, they cannot be relied upon for any purpose and they do not form part of any agreement. No liability is taken for any error, omission or misstatement. A party must rely upon its own inspection(s).

Plan produced for Your Move. Powered by www.focalagent.com

All measurements are approximate and are taken at the widest points. They should not be used for the purchase of furniture. Please note that appliances & services have not been tested. These particulars are issued on the express understanding that all negotiations are conducted through Anthony James Residential. They do not form part of a contract and are for general guidance only. We would strongly recommend that the information which we provide about the property is verified by yourselves on inspection and also by your solicitor before legal commitment to purchase. Photos and images are subject to copyright law.

See all our properties on...

