



Venus Road, London, SE18 5QQ

4 1 1

Price: Offers in Excess of £475,000

Summary

Offers in Excess of £475,000

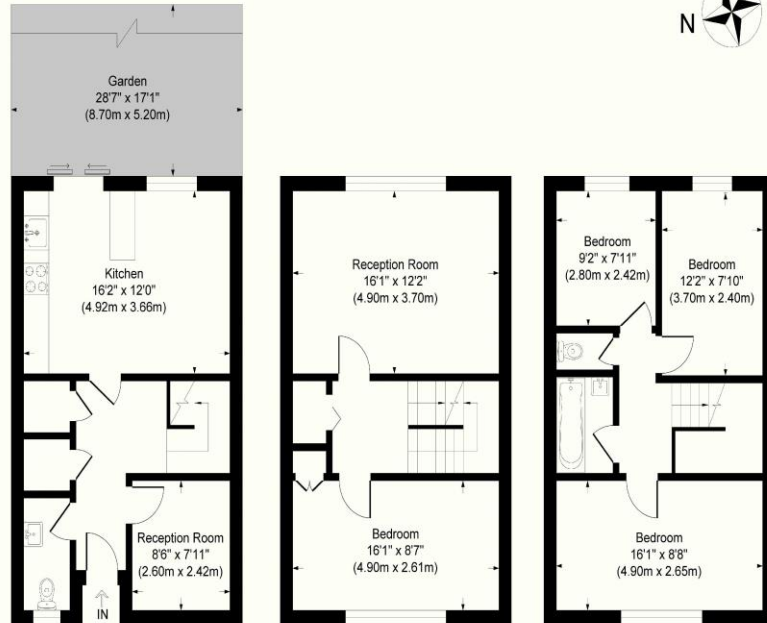
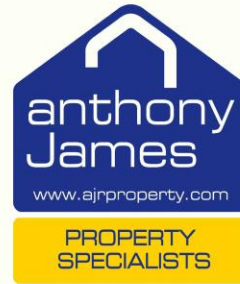
Situated in the heart of Woolwich Dockyard, this spacious four bedroom townhouse offers versatile living accommodation to suit a range of potential buyers. The current owners make use of the fifth, downstairs bedroom as a crucial office space, with a downstairs W/C for convenience and kitchen/diner to rear leading to the garden. Upstairs hosts a further three double bedrooms, family bathroom and the main reception room. Resident parking is available to the front, with Woolwich Dockyard station less than a quarter mile away.

Features

- Freehold Townhouse
- Close to Station
- Parking
- Versatile Accommodation
- Riverside Location
- EPC Rating - C







Ground Floor

First Floor

Second Floor

Venus Road

Approximate Gross Internal Area

Ground Floor = 40.1 sq m / 432 sq ft

First Floor = 41.3 sq m / 445 sq ft

Second Floor = 41.3 sq m / 445 sq ft

Total = 122.9 sq m / 1323 sq ft

This plan is for layout guidance only. Not drawn to scale unless stated. Windows and door openings are approximate. Whilst every care is taken in the preparation of this plan, please check all dimensions, shapes and compass bearings before making any decisions reliant upon them.



All measurements are approximate and are taken at the widest points. They should not be used for the purchase of furniture. Please note that appliances & services have not been tested. These particulars are issued on the express understanding that all negotiations are conducted through Anthony James Residential. They do not form part of a contract and are for general guidance only. We would strongly recommend that the information which we provide about the property is verified by yourselves on inspection and also by your solicitor before legal commitment to purchase. Photos and images are subject to copyright law.

See all our properties on...

